

Warewashing
Undercounter, double skin, pressure
boiler, drain pump, rinse aid &
detergent dispenser-60Hz

ITEM # _____

MODEL # _____

NAME # _____

SIS # _____

AIA # _____


520486 (EUC40GTL6)

 Undercounter Dishwasher,
 with double skin, pressure
 boiler, drain pump, rinse aid
 and detergent dispenser,
 400V/3N/60Hz - Thermal
 label compliant

Short Form Specification

Item No. _____

Unit shall be Electrolux Professional green&clean undercounter type hot water rinsing dishwashing machine with pressure boiler. Electrical characteristics to be __400 volts three phase operation with three automatic cycles of 90/120/180 seconds for lightly, normal or heavily soiled items. Rinse temperature and pressure guaranteed by built in pressure boiler. Washing performance is guaranteed by a powerful wash pump, upper and lower revolving washing spray arms. 304 Stainless steel construction to include door, frame, wash tank. The unit shall include drain pump, detergents and rinse aid dispenser pumps. NSF/ ANSI 3 Thermal label compliant.

Main Features

- Unique temperature interlock guarantees required temperatures in both the wash and final rinse in case of emergency cold water feeding.
- State-of-the-art electronic controls with built-in programming, self-diagnostics for serviceability and automatic interior self-cleaning cycle.
- Digital read-out keeps operator informed as to temperatures.
- Double skinned insulated wall ensures a low noise level and a reduction in heat loss from the machine.
- IPx4 water protection.
- Low noise level.
- Utilizes fresh hot rinse water.
- Washing capacity of 40 baskets or 720 dishes per hour.
- Built-in pressure boiler designed to raise incoming water to a guaranteed minimum temperature of 82° C for sanitizing rinse. No external boiler is required.
- 90/120/180 seconds cycle.
- Few seconds (variable) pause after washing and before rinsing ensures that no drops of unclean water will fall on the clean items.
- An effective rinse system uses only 2.8 liters of clean hot water per basket for lower running costs.
- Plug-in designed with integrated drain pump, detergent and rinse aid dispensers for fast and easy installation.
- Built-in detergent and rinse aid dispenser with automatic initial and continuous cycle loading for perfect results while minimizing service and maintenance needs.

Construction

- Element protection from dry fire and low water.
- Heavy duty Stainless steel construction.
- Interchangeable wash/rinse arms screw out for simple clean up.
- Internal cavity as well as exterior panels are all 304 series Stainless steel.
- Revolving wash/rinse arms above and below the basket.

Sustainability

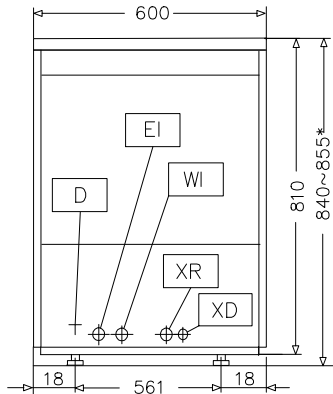
- Triple layer filtering system having large tank filter with double layer strainer to keep water clean for a long time.

Included Accessories

- 1 of Stabbing basket 18 PNC 888023 dishes 500x500mm

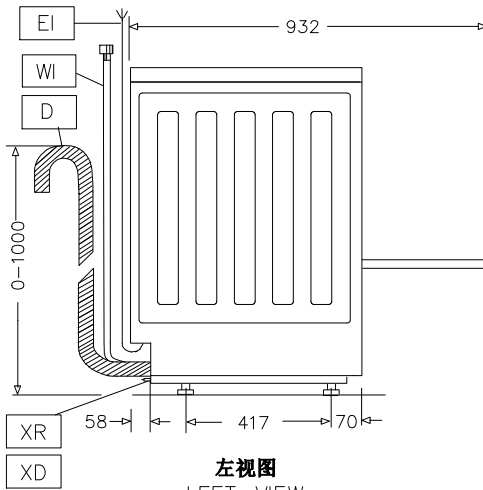
APPROVAL: _____

Front



前视图
 FRONT-VIEW

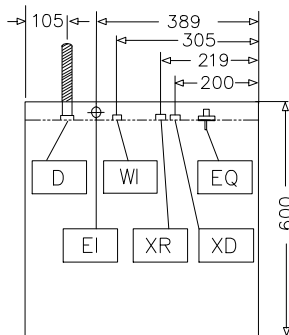
Side



左视图
 LEFT-VIEW

- D = Drain
- EI = Electrical inlet (power)
- EO = Electrical Outlet
- HWI = Hot water inlet
- XD = Detergent connection
- XR = Rinse aid connection

Top



上视图
 TOP-VIEW

Electric

Supply voltage:	
520486 (EUC40GTL6)	400 V/3N ph/60 Hz
Default Installed Power:	7.05 kW
Boiler heating elements:	4.5 kW
Tank heating elements:	2 kW
Wash pump size:	0.55 kW

Water:

Pressure, bar min/max:	2-5 bar
Drain line size:	22mm
Inlet Water supply pressure:	29 - 73 psi (2 - 5 bar)
Washing tank capacity (lt):	16
Boiler Capacity (lt):	5.5

Key Information:

Baskets per hour*:	40
Dishes per hour:	720
Working cycles time (sec.):	90/120/180
Wash temperature:	71-77°C
Cell dimensions - width:	500 mm
Cell dimensions - depth:	500 mm
Cell dimensions - height:	310 mm
Rinse temperature:	80-90 °C
External dimensions, Width:	600 mm
External dimensions, Depth:	600 mm
External dimensions, Height:	840 mm
Packaging size (WxDxH):	710x710x1000 mm

Sustainability

Water supply temperature*:	10-60 °C
Water consumption per cycle (lt):	2.8
Noise level:	<70 dBA